

THE POINT-OF-SALE LANDSCAPE IN GREENVILLE COUNTY



JUST SAY
SOMETHING
conversations about drugs and alcohol

POS DEFINED

The point of sale (POS) includes brick and mortar locations ("retailers") where products, like tobacco products, are marketed and sold. Examples are convenience stores, gas stations, grocery stores, liquor stores, vape shops, discount stores etc. The POS is where tobacco enters communities in Greenville County. Tobacco products found at the POS can influence people to start and continue smoking due to this exposure. These tobacco products get people like youth hooked and lead to addiction, disease, disability, and death.

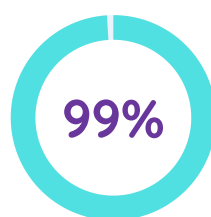
STORE ASSESSMENTS

In 2022, store assessments were conducted at tobacco retailers within Greenville County to document the marketing and selling of tobacco products at the POS. A total of 132 assessments were successfully completed in the county.

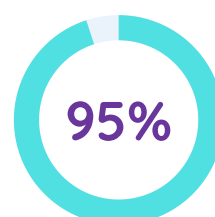


Key results from the 2022 store assessments:

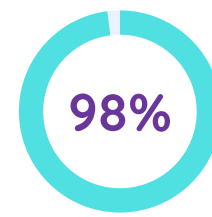
Percent of tobacco retailers visited who sold flavored tobacco products



sold flavored e-cigarettes

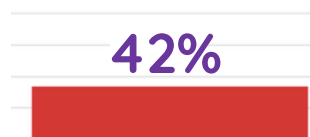


sold menthol cigarettes



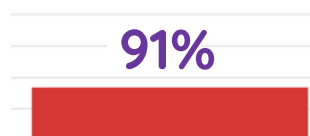
sold flavored cigarillos, little cigars, or blunts

Percent of tobacco retailers visited who had outdoor tobacco-related advertisements

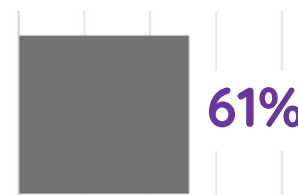


Highest percent of tobacco retailers visited by type

Percent of tobacco retailers visited who sold cigarillos, little cigars, or blunts for less than \$1

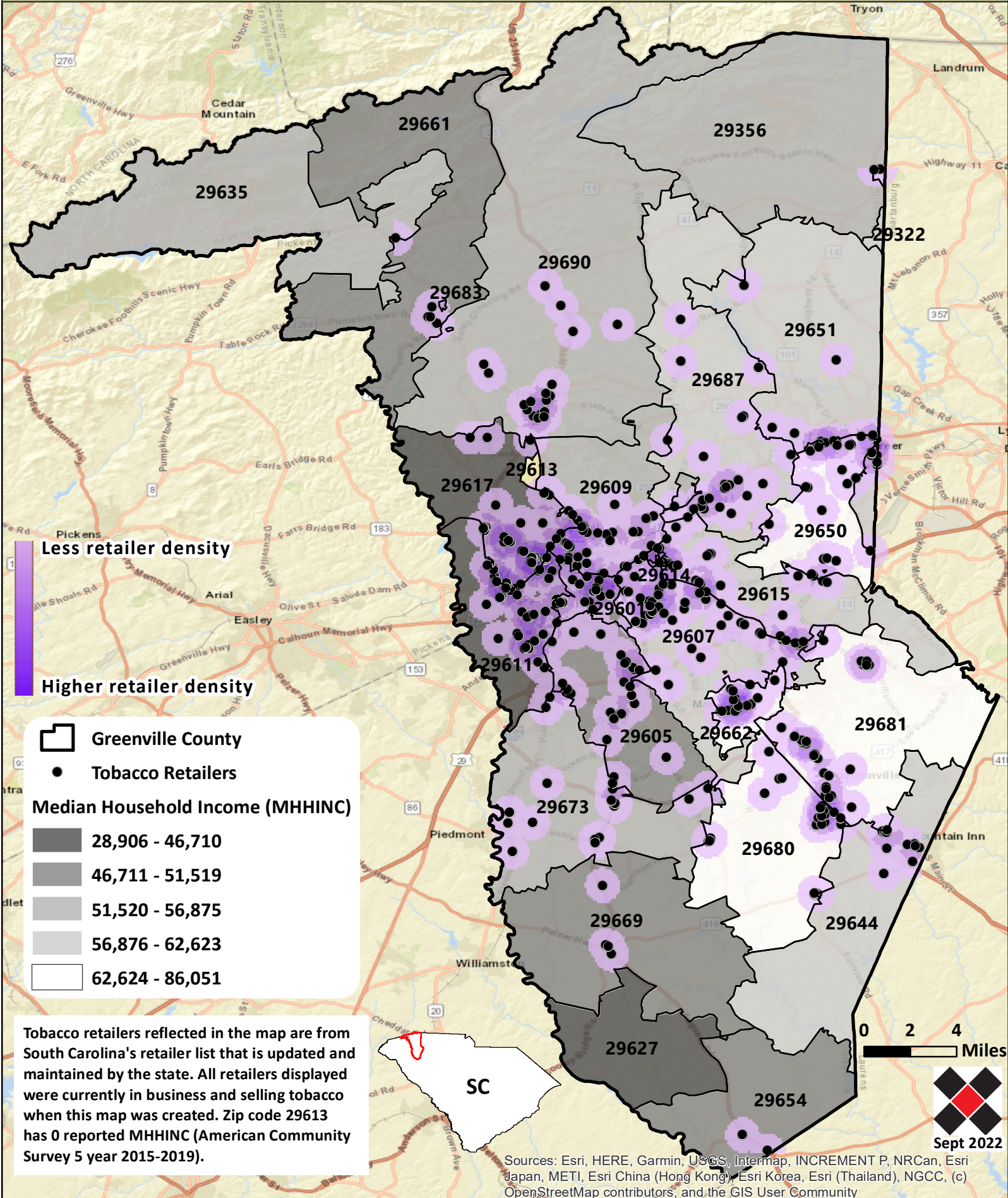


Convenience Stores



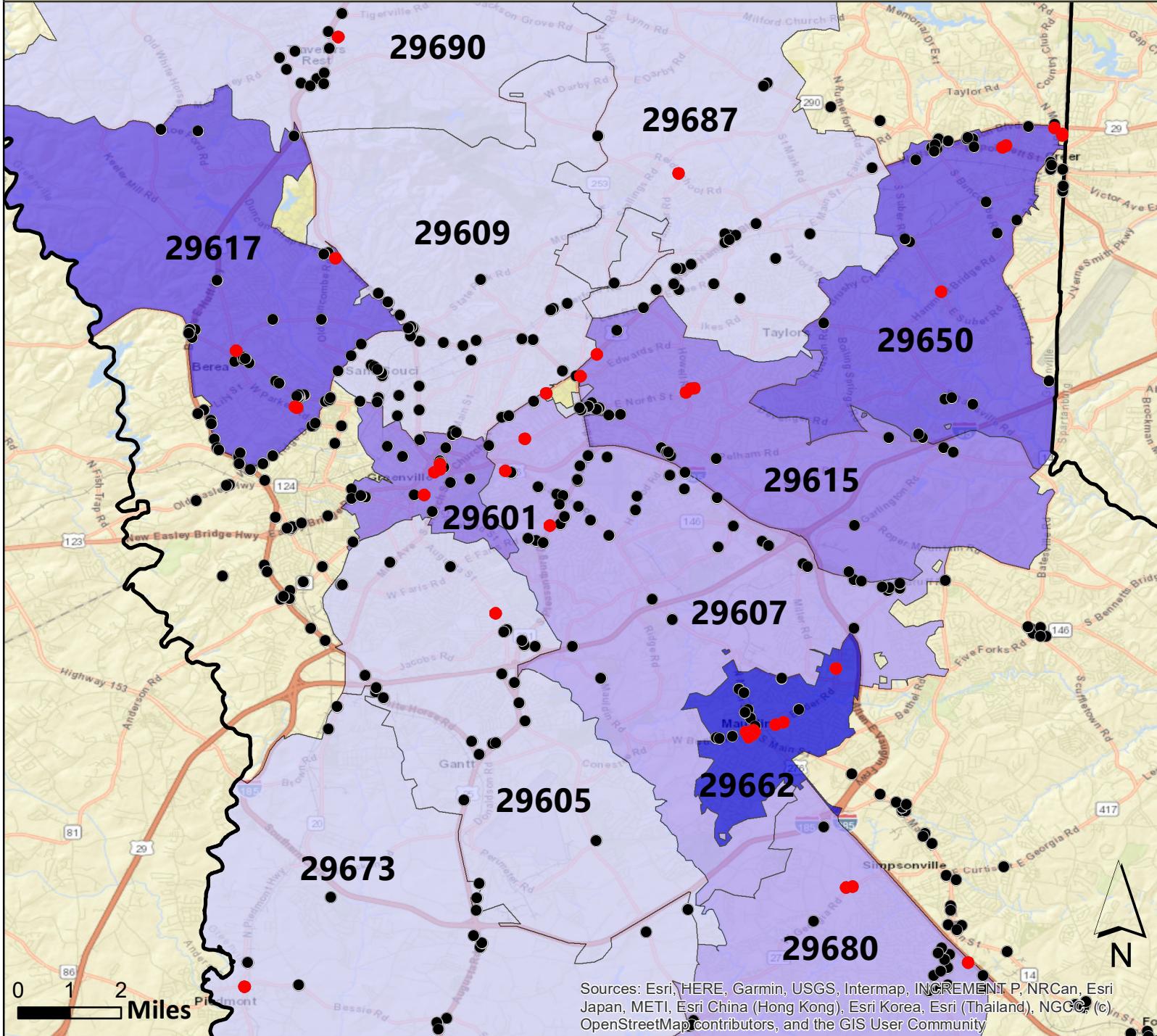
Data in this infographic is only for tobacco retailers who could be fully assessed (e.g., not closed) and sold any type of tobacco product in 2022. Retailers that did not meet this criteria are not included. Each percentage is dependent on the amount of data available (or missing) for that particular measure. This infographic was created in September 2022.

Density of Tobacco Retailers in Greenville County Zip Codes



Tobacco retailers reflected in the map are from South Carolina's retailer list that is updated and maintained by the state. All retailers displayed were currently in business and selling tobacco when this map was created. Zip code 29613 has 0 reported MHHINC (American Community Survey 5 year 2015-2019).

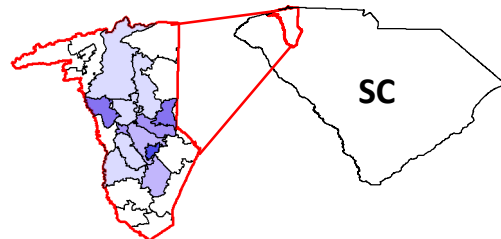
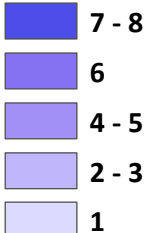
Zip Codes in Greenville County with the Highest Number of Tobacco Retailers within 1000ft of Public & Private K-12 Schools



Sources: Esri, HERE, Garmin, USGS, Intermap, INCREMENT P, NRCan, Esri Japan, METI, Esri China (Hong Kong), Esri Korea, Esri (Thailand), NGCC, (c) OpenStreetMap contributors, and the GIS User Community

- Greenville County
- Tobacco Retailers within 1000ft of Schools
- Tobacco Retailers

Number of Schools within 1000ft of Tobacco Retailers



Tobacco retailers reflected in the map are from South Carolina's retailer list that is updated and maintained by the state. All retailers displayed were currently in business and selling tobacco when this map was created.